

CNV-EC7704



Overview

CNV-EC7704 industrial computer features the Intel® Core™ i5-6500T processor and fanless PC designed for factory automation and for smart city applications. It supports up to 32G DDR4 memory and have one storage device for SSD. The CNV-EC7704 comes with 1 x VGA, 1 x HDMI, 2 x Gigabit LAN ports, 4x USB3.0 ports, and 1x COM port including RS232/485. CNV-EC7704 supports 24V DC input, and can be operated in a wide range of temperatures from -20°C to 70°C. This system also

supports 2x PCI/PCIe expansion, which can be combined to insert 2x PCI/PCIe devices.

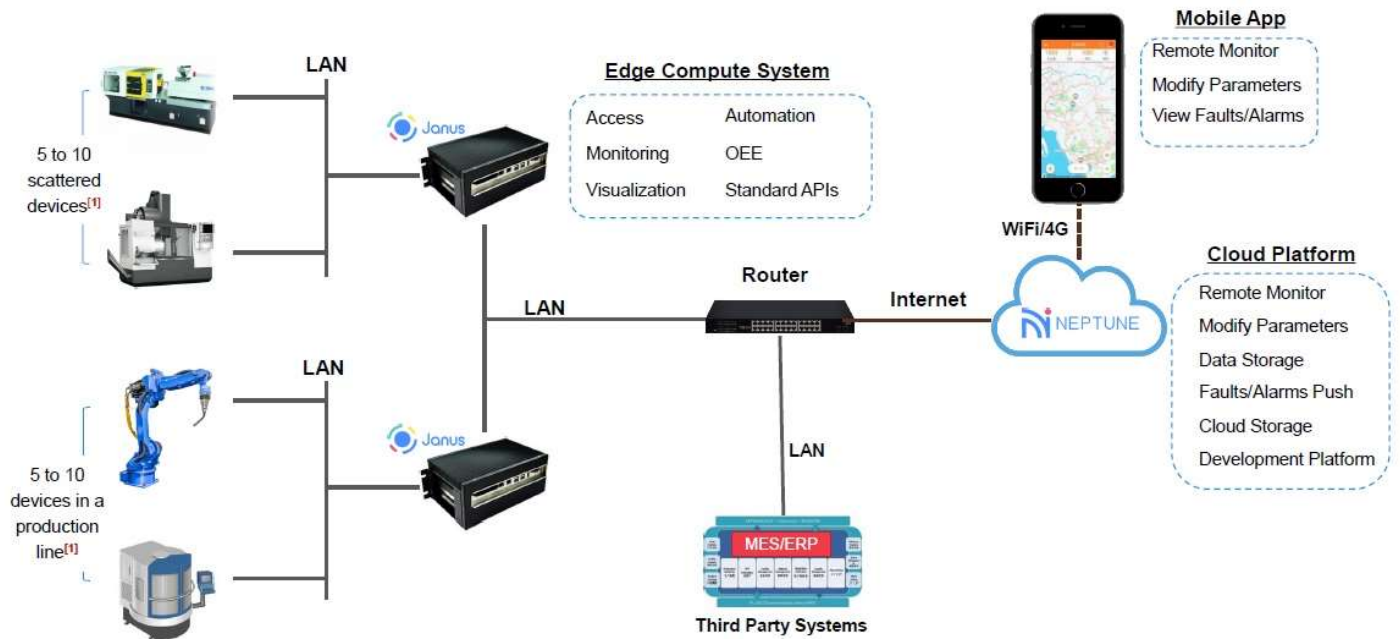
Googoltech's CNV-EC7704 is the supporting hardware for the industrial Internet edge computing system. It can integrate motion control, machine vision, AI artificial intelligence, equipment networking, data collection and other industrial requirements. CNV-EC7704 can support the digital interconnection of most motion control cards, data acquisition cards, industrial cameras and various industrial equipment on the market. Through the built-in Janus@Edge software, it provides monitoring, scheduling, remote control, process management, process optimization and other functions for industrial equipment on the manufacturing site, and implements cloud management through Neptune@Cloud.

Main Features

- Industrial computer for motion control card & machine vision.
- Industrial electronic components, stable and reliable.
- 2x PCI/PCIe expansion, can be combined to insert 2x PCI/PCIe devices.
- Fanless compact embedded computer, and wide operational temperature design, temperature range is -20 °C ~ 70 °C.
- The default Linux operating system provides flexible extensibility and can run control programs or systems of various development languages.
- Triton@Device in the system can implement device networking, data interaction and automatic connection to Janus@Edge and Neptune@Cloud.



System Structure



*1: Typically, 5 to 10 devices per edge compute node is recommended. Actual numbers may vary according to device data.

Specifications

Item	Description
Processor	Intel Core i5-6500T
System RAM	16GB DDR4 (Options: 4G/8G/16G/32G)
Storage	256GB SSD (Options: 64GB/128GB/256GB/512GB)
Network	Intel® I211-AT 1Gbits Ethernet x2
Expansions	PCIe (x4) x 1, PCIe(x1) x1 Can customize PCI slots.
External Connectors	USB 3.0 x 4, GPIO x 16 (8 in, 8 out), RS232/485 x 1
Display Interface	VGA x 1, HDMI x 1
Physical	Description
Power	DC 24V 5A
Dimension (LxWxH)	298x164x109 mm (With mounting ears) 258x164x109 mm (Without mounting ears)
Weight	About 6.7KG
Installation	Desktop/Wall Mount
Operating Temperature	-20°C ~ 70°C
Operating Humidity	0% ~ 90% (Non-condensing)



Specifications

Software	Description
Operating System	Windows 7, Windows 8, Windows 10, Ubuntu Linux 18.04 LTS 64-bit.
Core Software	Janus@Edge

Application

- Industrial Control: Smart welding and glass carving. Process optimization and quality control.
- Smart Factory: Equipment interconnection and automatic scheduling of production lines.
- Smart Mine: Remote monitoring and equipment safety management.
- Sewage Treatment: Intelligent monitoring and real-time data acquisition.
- Smart Agriculture: Plant factories, and aquaponics.
- Smart Building: Energy-saving and comfortable personalization.



Smart Welding



Glass Carving



Smart Factory



Sewage Treatment



Smart Agriculture



Smart Building



Ordering Guide

Function	Ordering Number	Description
Hardware + Software	Janus Edge Computing System	<ul style="list-style-type: none"> - Hardware: Industrial computer CNV7704-01. - Software: Janus edge computing & analytics. - A single set of Janus supports up to 500 devices concurrent data interaction. - Support data synchronization to Neptune cloud platform (users need to have enough data space support in Neptune). - After Janus is registered and activated by Neptune, it does not depend on the Neptune cloud platform and can run independently.
User License	User License	<p>Device access authorization:</p> <ul style="list-style-type: none"> - Every device connected to Janus or Neptune requires a license. - It needs to be used with Janus edge computing system or Neptune cloud platform. - Duration of license: Permanent. - One device is connected to Janus and Neptune at the same time, only one license is needed.

Optional Item

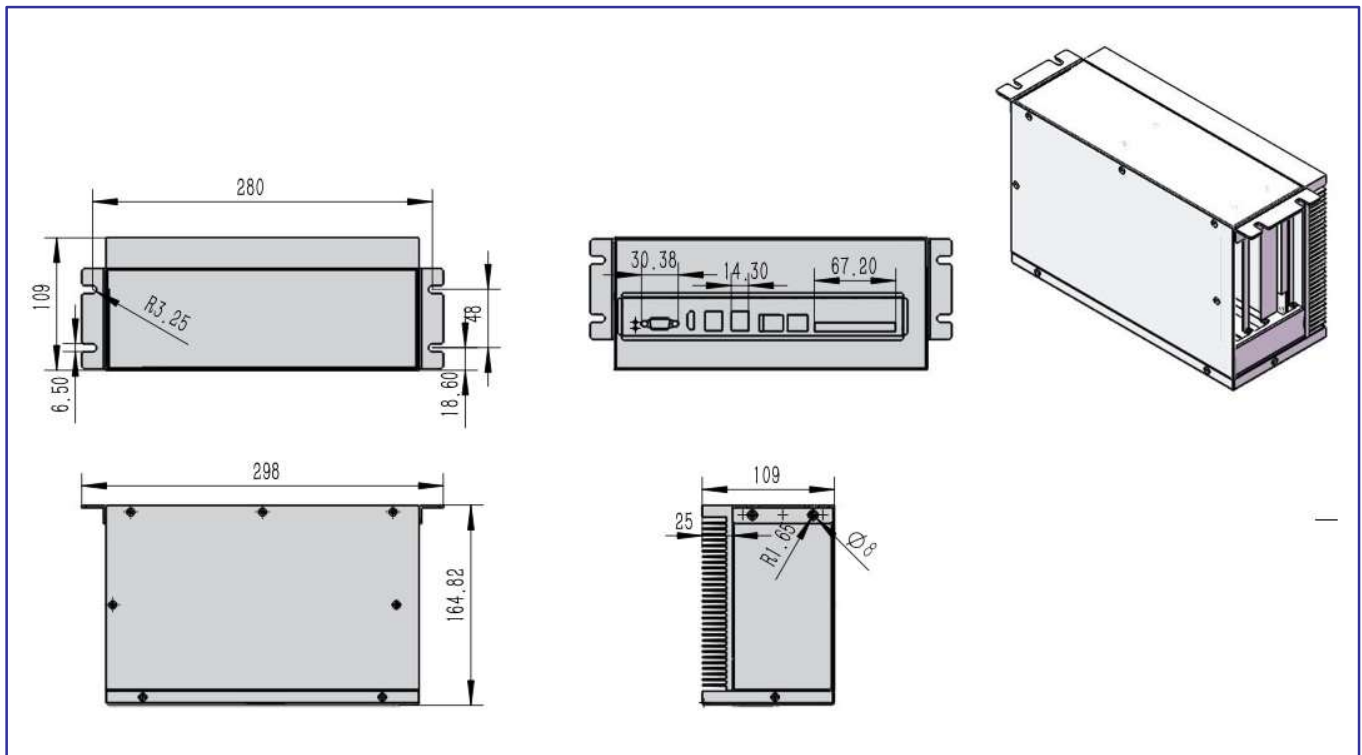
Function	Ordering Number	Description
Cloud Platform Service	Neptune@Cloud	<p>Cloud platform storage pricing (calculated per GB per year):</p> <ul style="list-style-type: none"> - Provide user data access and usage services in the cloud. - Provide device data remote monitoring and management tools. - Provide system interface to support data exchange with third-party systems. - No concurrent limit on the number of devices. - Neptune cloud platform can be used in series with the Janus edge computing system, or it can be used separately.

Ordering Guide

Optional Item

Function	Ordering Number	Description
Software Custom Development Service		<p>Software development service (calculated per person per day):</p> <ul style="list-style-type: none"> - Customize Janus edge computing system or develop applications on Neptune cloud platform according to user needs (App). - Determine the man-day workload required for development according to the content of the user's needs.

Dimension



GOOGOL TECHNOLOGY (HK) LIMITED
 Unit 1008-09, 10/F C-Bons International Center, 108
 Wai Yip Street, Kwun Tong, Kowloon, Hong Kong
 Tel.: +(852) 2358-1033
 Fax: +(852) 2719-8399
 E-mail: hkgoogol@gmail.com / sales@googoltech.com
 Web: http://www.googoltech.com

GOOGOL TECHNOLOGY (SZ) LIMITED
 Room W211, IER Building (PKU-HKUST High-
 tech Industrial Park, Nanshan District, Shenzhen,
 PRC (Postal Code: 518057)
 Tel.: +(86) 755-26970817, 755-26970824,
 Fax: +(86) 755- 26970821
 E-mail: googol@googoltech.com
 Web: www.googoltech.com.cn

GOOGOL TECHNOLOGY (TWN) LIMITED
 2F., No. 22, Ln. 10, Fuzhong 2nd St., Xitun
 Dist., Taichung City 407, Taiwan
 Tel.: +(886) 4-2358-8245
 E-mail: twinfo@googoltech.com
 Web: http://www.googoltech.com

www.googoltech.com

